



## ***Wimba Create***

Version 2.5

## **Installation Guide**

<b>Wimba Create Installation Guide</b>	<b>1</b>
<b>Before Installing Wimba Create</b>	<b>1</b>
Previous Versions	1
System Requirements	1
<b>Installing Wimba Create</b>	<b>2</b>
<b>Wimba Create Licenses and Trial Versions</b>	<b>3</b>
<b>Macro Security in Microsoft Word</b>	<b>4</b>
Macro Security in Word 2003	4
Macro Security in Word 2007	5
Macro Security in Word 2010	6
<b>Disclaimer</b>	<b>8</b>

# Wimba Create Installation Guide

## Before Installing Wimba Create

Before installing Wimba Create, review the following information regarding previous versions and system requirements.

### Previous Versions

Installing a new version of Wimba Create automatically removes any previously installed versions on your computer. If you have made modifications to your existing Wimba Create installation, it is recommended that you back up these changes before installing a new version.

### System Requirements

- Windows XP, Vista, or 7
- Microsoft Word 2003, 2007, or 2010

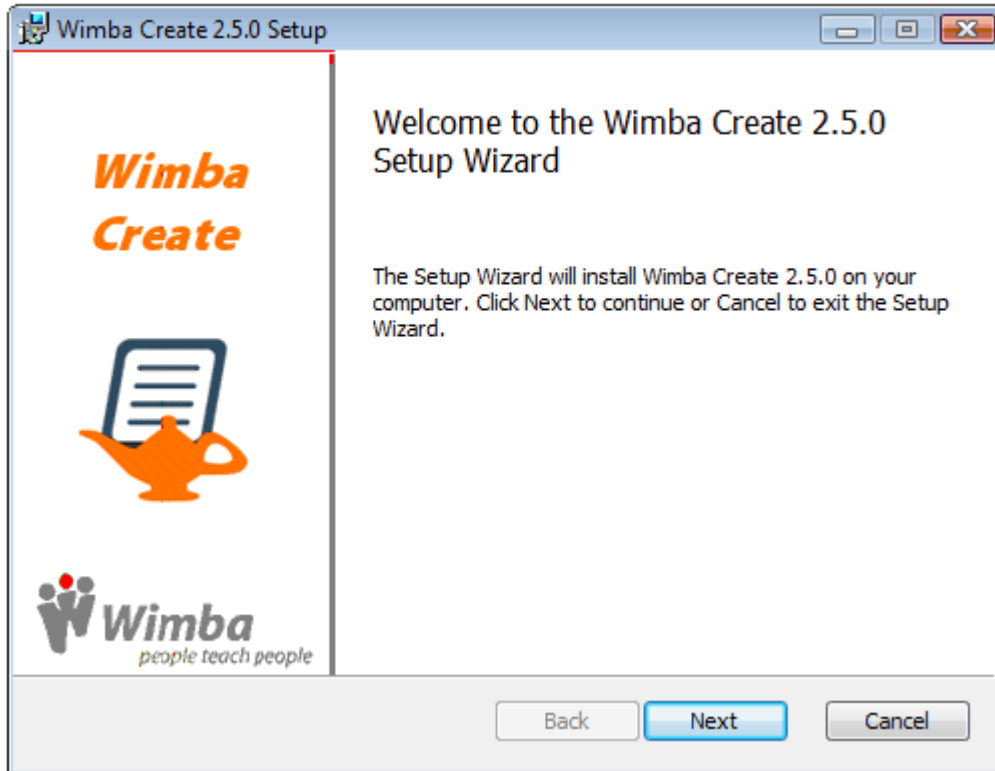
**Note:**

You must be logged in as a user with either Administrator or Power User privileges to install Wimba Create.

## Installing Wimba Create

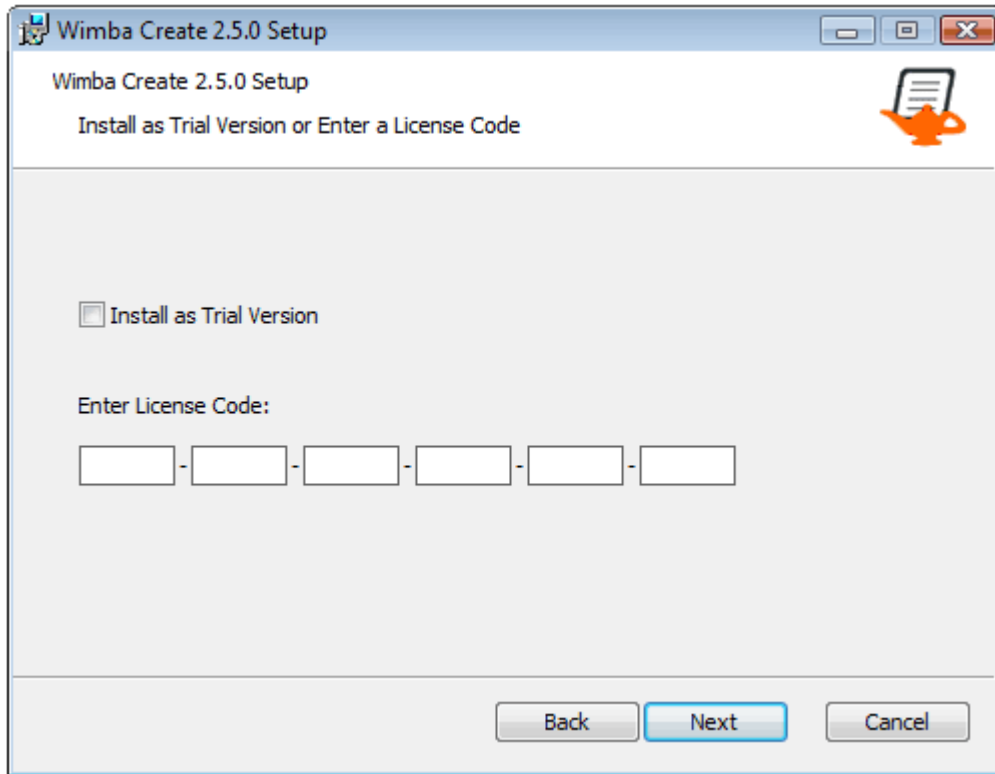
### To Install Wimba Create

1. Close all Microsoft Office applications, including Microsoft Word.
2. Double-click the **SetupWCr2-5-x.exe** installer application. The Wimba Create installer opens.



3. Click **Next**. The End User License Agreement appears.
4. Review the license agreement and check the **I accept the terms in the License Agreement** box.
5. Click **Next**.

6. Check the **Install as Trial Version** box or enter your License Code.



7. Click **Next**.
8. Accept the default location or select another location for installation.
9. Click **Next**.
10. Click **Install**. Wimba Create is installed on your computer.
11. Click **Finish**.

**Note:**

If you attempt to install Wimba Create while a Microsoft Office application is running, the installer will still run but you will receive an error message and the installation will not be successful. To complete the installation, run the SetupWCr2-5-x.exe application a second time.

## Wimba Create Licenses and Trial Versions

Your Wimba Create license code is sent you by email. If you have not received your license code, please contact Wimba Hosting Services with the details of your order. If you do not enter a license code during the installation process, Wimba Create will run for 14 days in trial version mode.

## Macro Security in Microsoft Word

Wimba Create has been digitally signed to allow it to run with macro security level settings in Word set to 'High'. However, the first time you run Microsoft Word after installing Wimba Create, you may have to re-enable macros or authorize Wimba content as a trusted source, depending on your security settings.

### Macro Security in Word 2003

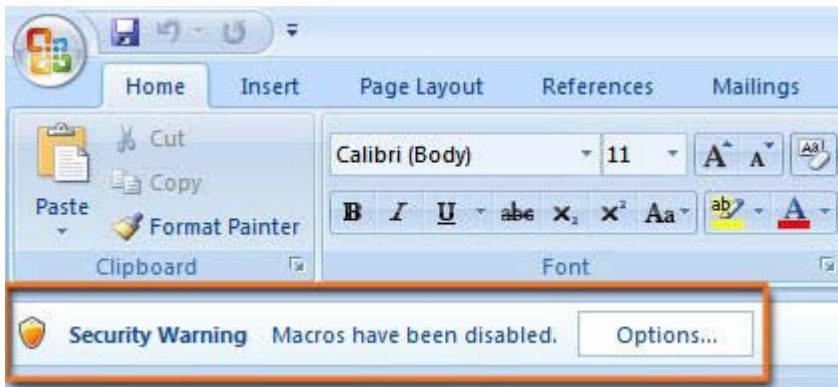
The first time you run Microsoft Word 2003 after installing Wimba Create, you may be presented with a Security Warning window.



Check the **Always trust macros from this publisher** box and then click the **Enable Macros** button.

## Macro Security in Word 2007

The first time you run Microsoft Word 2007 after installing Wimba Create, you may be presented with a Security Warning information bar. Click the **Options...** button.



The Microsoft Office Security Options window opens.



Select the **Trust all documents from this publisher** radio button and then click **OK**.

## Macro Security in Word 2010

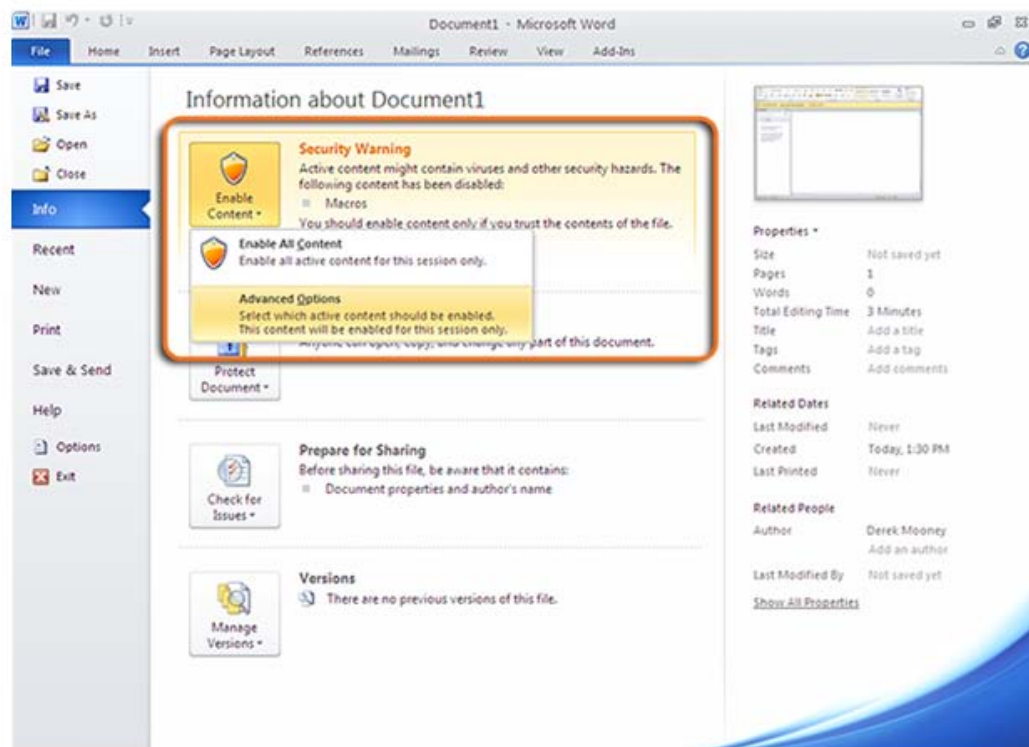
The first time you run Microsoft Word 2010 after installing Wimba Create, you may be presented with a Security Warning information bar. Click the **Enable Content** button. Whenever you close Word, this security setting will reset. To avoid this warning, follow the steps below to permanently enable all content from Wimba.

### To Permanently Enable Macros in Word 2010

1. Open Word 2010. A Security Warning information bar may appear.
2. If the Security Warning does appear, click the **Macros have been disabled** link next to the **Enable Content** button. The Information window opens.

If the Security Warning information bar does not appear, click the **File** menu and select **Info**.

3. Click and hold the **Enable Content** button until the options **Enable All Content** and **Advanced Options** appear.



4. Click **Advanced Options**. A new window opens.



5. Select the **Trust all documents from this publisher** radio button under the certificate signed by Wimba.

Signature

Signed by: Wimba, Inc.

Certificate expiration: 7/10/2011

Certificate issued by: Thawte Code Signing CA

[Show Signature Details](#)

Help protect me from unknown content (recommended)

Enable this content

Trust all documents from this publisher

6. Click **OK**.

# Disclaimer

This Guide, as well as the software described in it, furnished under license may only be used or copied in accordance with the terms of such license. The information in this Guide is furnished for information purposes only, is subject to change without notice, and should not be construed as a commitment by Wimba, Inc. Wimba, Inc. assumes no responsibility or liability for any errors or inaccuracies that may appear in this Guide. Except as permitted by such license, no part of this Guide publication may be reproduced, stored in a retrieval system or transmitted in any form by any means, electronic, mechanical, recording or otherwise without the prior written permission of Wimba, Inc. Any references to company names in examples or illustrations are for demonstration purposes only and are not intended to refer to any actual organizations.

Wimba Create and the Wimba logos and trademarks are property of Wimba, Inc., 10 East 40th St, Floor 11, New York, NY 10016.